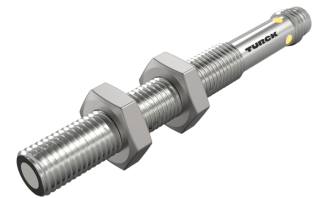
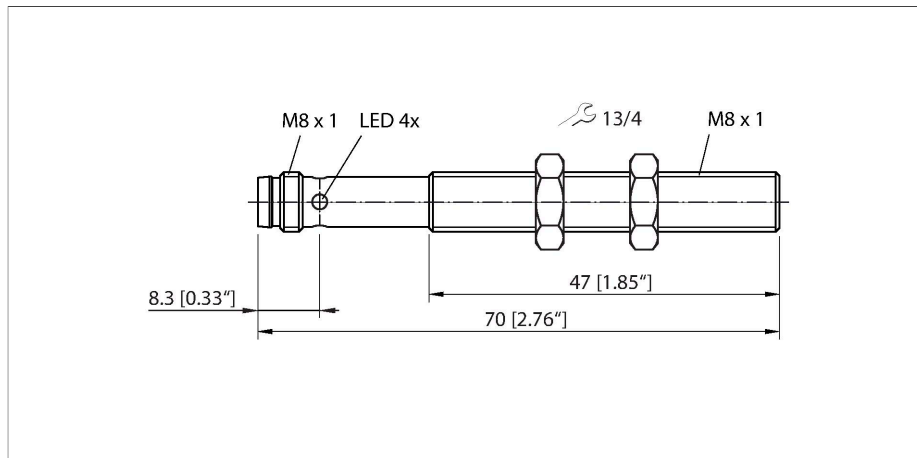


RU10L-M08-UP8X-V1141

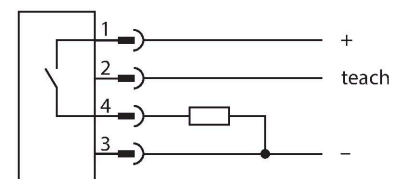
Ultrasonic Sensor – Retroreflective Sensor



Features

- Smooth sonic transducer face
- Cylindrical housing M08, potted
- Connection via M8 × 1 male connector
- Teach range adjustable via connection cable
- Blind zone: 2 cm
- Range: 10 cm
- Resolution: 0.2 mm
- Aperture angle of sonic cone: ±9 °
- 1x switching output, PNP
- Teachable settings
- NO/NC programmable
- IO-Link

Wiring diagram



Functional principle

Ultrasonic sensors capture a multitude of objects contactlessly and wear-free with ultrasonic waves. It does not matter whether the object is transparent or opaque, metallic or non-metallic, firm, liquid or powdery. Even environmental conditions such as spray, dust or rain hardly affect their function.

Technical data

Type	RU10L-M08-UP8X-V1141
ID	100003159
Ultrasonic data	
Function	Retroreflective Sensor
Range	20...100 mm
Resolution	0.2 mm
Minimum switching range	5 mm
Ultrasound frequency	484 kHz
Temperature drift	≤ 0.2 % of full scale/K
Approach speed	≤ 1 m/s
Pass speed	≤ 1 m/s
Electrical data	
Operating voltage	18...30 VDC
No-load current	≤ 50 mA
Load resistance	≤ 1000 Ω
Residual current	≤ 0.1 mA
Readiness delay	≤ 300 ms
Communication protocol	IO-Link
Output function	NO/NC, PNP
Output 1	Switching output or IO-Link mode
Switching frequency	≤ 20 Hz
Hysteresis	≤ 5 mm
Voltage drop at I _o	≤ 2.5 V
Short-circuit protection	yes
Reverse polarity protection	yes
Setting option	Remote Teach IO-Link

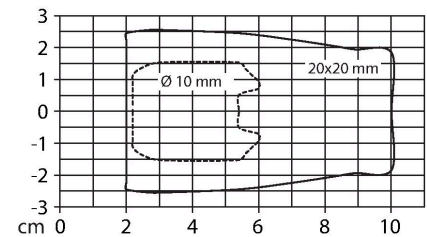
Technical data

IO-Link	
IO-Link specification	V 1.1
IO-Link port type	Class A
Communication mode	COM 2 (38.4 kBaud)
Process data width	16 bit
Measured value information	15 bit
Switchpoint information	1 bit
Frame type	2.2
Minimum cycle time	2 ms
Function pin 4	IO-Link
Maximum cable length	20 m
Profile support	Smart Sensor Profile
Included in the SIDI GSDML	Yes
Mechanical data	
Design	Threaded barrel, M08
Dimensions	Ø 8 x 70 mm
Housing material	Metal, CuZn, Nickel Plated
Transducer material	Plastic, Epoxyd resin and PU foam
Electrical connection	Connector, M8 × 1, 4-wire
Ambient temperature	0...+50 °C
Storage temperature	0...+50 °C
Pressure resistance	0.5...5 bar
Protection class	IP67
Switching state	LED, Yellow
Tests/approvals	
MTTF	acc. to SN 29500 (Ed. 99) 40 °C
Declaration of conformity EN ISO/IEC	EN 60947-5-2
Approvals	CE cULus

The sonic cone diagram indicates the detection range of the sensor. In accordance with standard EN 60947-5-2, quadratic targets in a range of sizes (20 × 20 mm, 100 × 100 mm) and a round rod with a diameter of 27 mm are used.

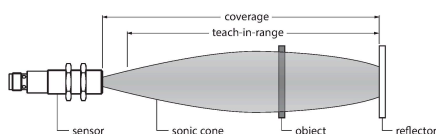
Important: The detection ranges for other targets may differ from those for standard targets due to the different reflection properties and geometries.

Sonic Cone



Mounting instructions

Mounting instructions/Description



Setting the reflector position

The ultrasonic sensor features a switching output with a teachable switching range. The green and yellow LEDs indicate whether the sensor has detected the object.

A switching range is taught in. This must be within the detection range. In this operating mode, the taught reflector is detected permanently without an object.

Easy-Teach

Connect teach adapter TX1-Q20L60 between the sensor and the connection cable

Position the stationary reflector within the detection range
Press and hold button against Gnd for at least 2 s

- Return to normal operating mode after 17 s or more.

After a successful teach-in, the green LED flashes at 3 Hz and the sensor operates automatically in normal mode.

#LED response

In normal operating mode, the two LEDs indicate the switching state of the sensor.

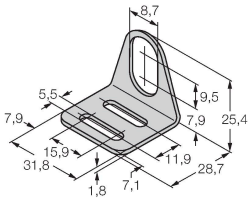
- Green: Reflector within the detection range
- Yellow: Object between the sensor and the reflector

Accessories

MW-08

6945008

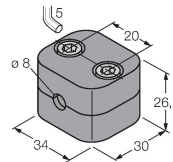
Mounting bracket for threaded barrel sensors; material: Stainless steel A2 1.4301 (AISI 304)



BSS-08

6901322


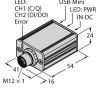
Mounting clamp for smooth and threaded barrel sensors; material: Polypropylene



Accessories

Dimension drawing	Type	ID	
	PKG4M-2/TEL	6625061	Connection cable, M8 female connector, straight, 4-pin, cable length: 2 m, jacket material: PVC, black; cULus approval
	PKW4M-2/TEL	6625067	Connection cable, M8 female connector, angled, 4-pin, cable length: 2 m, jacket material: PVC, black; cULus approval
	PKG4M-2-RSC4.4T/TXL	6627063	Extension cable, M8 female connector, straight, 4-pin to M12 male connector, straight, 4-pin, cable length: 2 m, jacket material: PUR, black; cULus approval

Accessories

Dimension drawing	Type	ID	
	TBEN-S2-4IOL	6814024	Compact multiprotocol I/O module, 4 IO-Link Master 1.1 Class A, 4 universal PNP digital channels 0.5 A
	USB-2-IOL-0002	6825482	IO-Link Master with integrated USB port