

A Game Changer of Data Collection for Your Factories

 **SNAP SIGNAL**

Smart Integration

IIoT Industrial Gateway

- Supports common signal types such as Analog, NPN/PNP, IO-Link, Serial, and Modbus
- Data can be output to PLCs, HMIs, SCADA, or Banner CDS
- Optimized for maintenance prediction, energy monitoring, and process efficiency




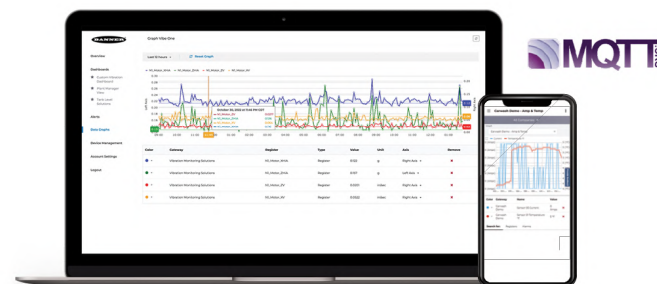
EtherNet/IP
PROFINET
Modbus
Supports Ethernet/IP, Profinet, Modbus TCP


Built-in scripting support
MicroPython, Script Basic


Logic and mathematical
operations

 **IO-Link**
Modbus
RS485 RTU
Serial communication
functions


aws
MQTT
Supports Banner CDS,
AWS IoT Core, and
Sparkplug B



Solution Highlights



Effortless Setup, Instant Insights

No coding needed, just a few clicks in the software to start collecting valuable data right away



Real-Time Visibility, Anytime, Anywhere

Upload data to SCADA or cloud platforms for both on-site and remote monitoring



Keep Your Know-How Flowing

Turn data into lasting know-how with clear SOPs, faster training, and smooth handovers



Flexible Signal Integration

Supports multiple signal types, reducing wiring complexity and eliminating potential analog interference



Ready for Old and New Machines

Works in tough environments with both legacy and modern equipment



Modular and Easy to Install

Flexible design for quick setup and future expansion

Case Study



Semiconductor

Vibration Monitoring for IC Test Machine Pumps

Pain Points

- Continuous pump operation risks overheating if not monitored in time
- No real-time alerts leads to delayed maintenance
- Downtime affects production and lowers yield

Solution Highlights

- Vibe-IQ algorithm learns motor behavior and sets alert thresholds
- 3-axis sensor detects pump issues in real time
- Supports predictive maintenance to data logging system
- Integrates with existing monitoring or IIoT systems

QM30VT3
Vibration Sensor



Manufacturing

Forming Process Quality Monitoring

Pain Points

- Product size or flatness varies due to environment or machine conditions
- Visual inspection depends on operator experience and is prone to error
- No real-time data or traceability reduces quality control efficiency

Solution Highlights

- Use sensors to monitor key parameters like width, thickness, and temperature
- All-time inspection to improve the consistency and reduce operation error
- Automatically log production data for traceability and process optimization

M18T Temperature Sensor
LM150 Precision Measurement Sensor
EZ-Array Measuring Light Curtain



Metalworking

Energy Monitoring to fulfil Sustainability

Pain Points

- Energy data is scattered across machines and hard to manage
- Traditional meters hard to integrate to IIoT system
- ESG reporting suffers from missing real-time data

Solution Highlights

- Clamp type of current Sensors read the machine current draw continuously
- Real-time data available through cloud or existing systems
- Quick installation without affecting production or replacing equipment

S15C-CT-MQ
Current Sensor



Electronics

Differential Pressure Monitoring in PCB Ovens

Pain Points

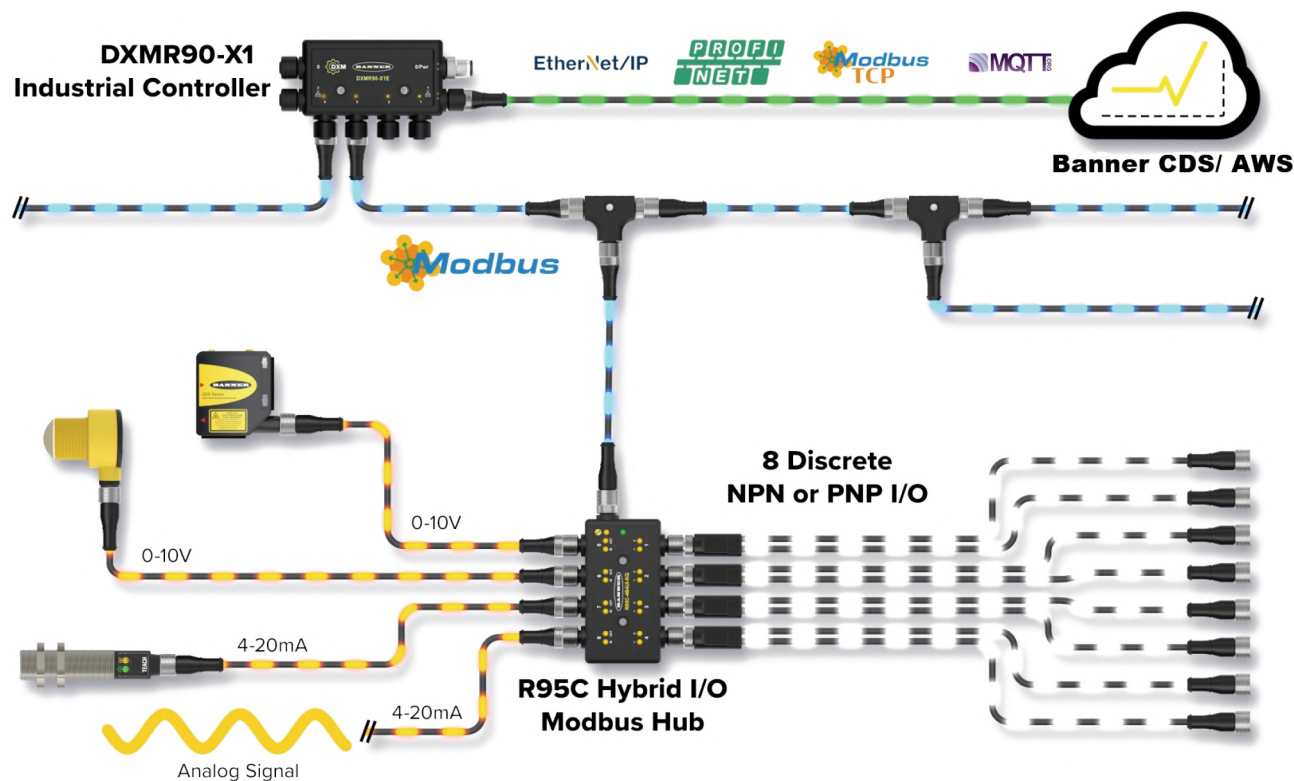
- Oven pressure shifts affect PCB quality and are hard to detect manually
- Routine checks rely on experience and may miss filter clogs or faults
- No data history makes audits and root-cause analysis harder

Solution Highlights

- Differential pressure sensor monitors exhaust pressure in real time
- Data centralized via Modbus RTU and industrial gateways
- Integrated with MES for historical trends and preventive maintenance insights

QM42 Differential
Pressure Sensor





Accessories



SMBR90S
Mounting Bracket



4-pin M12 D-code to
RJ45 Shielded Ethernet



4-Pin M12 Double-Ended
Straight Connector



4-pin M12 D-code
Double-Ended Male Ethernet



S15Y Splitter
4-pin Male M12 A Code



DC Power Supply -
Wall Mount

Selection Guide



DXMR90-X1E Industrial controller

- Supply Voltage : 12 to 30 V DC
- Communication Protocols : Modbus RTU, Modbus TCP, Ethernet/IP, and PROFINET
- Modbus master support for flexible device integration

IP68

IP67

IP65



DXMR1200 IIoT Gateway

- Supply Voltage : 12 to 30 V DC
- Communication Protocols : Modbus RTU, Modbus TCP, Ethernet/IP, and PROFINET
- Modbus master support for flexible device integration
- 8GB storage – over 1 year of data logging

IP67



S15C Converter

- Easily converts signals like discrete, analog, and more to Modbus, which makes it easy to monitor and send data to the cloud
- Allows previously incompatible devices to be connected to a smart system

IP68

IP67

IP65



R45C Modbus to Dual Converter

- Compact Modbus to analog converter that can output an analog value, voltage, or current as presented to the appropriate Modbus register

IP68

IP67

IP65



R95C Hybrid Modbus Hub

- Consolidate discrete and analog I/O and sent it to a control system via Modbus RTU
- Reduce system cost and installation time with four analog I/O, plus eight discrete I/O

IP68

IP67